

## A word from our president

### BVAC Pop-up-Shop 8-10 July

**A reminder we will set up on the Thursday and bump-out on the Saturday afternoon.**

WSC has 6 tables booked and currently they are all spoken for. Cost is \$60 per table and \$10 for shelves. We owe BVAC \$420 for the tables, so it would be appreciated if participants could pay ahead of time.



### The kilns

The new small kiln is now fully programmed and working well thanks to Ally who has taken charge. Ally has also cleaned up some of the shelves and freshened up their bat wash.

The large kiln, and now the oldest, is being a little temperamental, working well most of the time but occasionally not progressing past the first few minutes.

A selection of cones has been purchased to follow the progress of firings; principally in the large kiln which appears to overfire in parts and not in others - typical large kiln.

### On-glaze with Judy

Postponed to September - Judy is a busy girl!

### Raku Sundays

#### 6 June at Sherwood

A brilliant day - sunny but not too hot.

Most of our work turned out well - small to large! And we had plenty of food to celebrate with.

We were joined by a couple of new members with their first exposure to Raku and hope they found it an exciting and educational experience.

#### 4 July Redcliffe

Joint Raku with the Redcliffe Pottery Group which should be fun. Limit is 2 to 3 pieces 10cm wide x 15cm high maximum size for now.

We plan to take the Sherwood bus to make a full day of it - leaving at 9:00am - stay tuned.

### Fairfield Library Exhibition

We have the whole month of October for a display in the library to highlight our group and what we do to the wider community. The photo below shows the limited cabinet space available.



Cheers, David Bartholomew  
President  
Western Suburbs Clayworkers

*Stay well and busy*

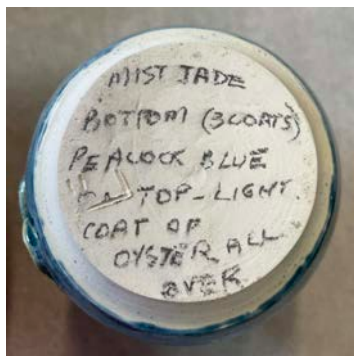
## contacts

**Western Suburbs Clayworkers**  
38 Thallon St Sherwood 4075  
Email  
[wsclayworkers@hotmail.com](mailto:wsclayworkers@hotmail.com)

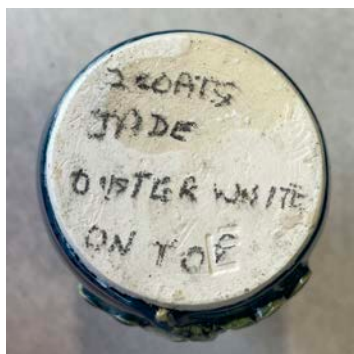
Newsletter  
David Bartholomew  
[david@vcgraphics.com.au](mailto:david@vcgraphics.com.au)

**Done anything interesting artistically lately? Let us know with a few words and photos**





Marelle brought along her work from the glaze on glaze decorating workshop with Lyn. Note the descriptions on the bases for future reference.



Earth...Air...Water...Fire

These are the ingredients of pots and human beings alike, And each formula contains also the element of chance.

Do not seek perfection in pots or people  
For your search will go unrewarded,  
And you will miss knowing  
Many good pots and many good people.

Thanks Diane for this insightful quote

## A cautionary tale

What happens to your shelf when the glaze runs!



## A sad tale

The pot wasn't dry enough and a bit thick on the base and after a 13 hour bisque - damn this weather!





# Raku Sunday - 6 June (Queensland Day)



The day's work highlighted the variety of forms and finishes available in a Raku firing.

Note we rapid fire so the clays used are strictly Raku; ie quite groggy and robust to take the thermal shock.



## Some Popular Raku glazes

### Ferguson's White Crackle

Gerstley Borate	=	65
Nepheline Syenite	=	20
EPK Kaolin	=	5
Silica	=	10
Total	=	100%

For excellent crackle results, fire your pot, take out of the kiln and allow to rest for about one minute. When glaze 'pings' put the pot into the reduction container, cover with paper, allow to flame, then close the cover. Leave for about two minutes, lift the lid and allow the paper to re-ignite. Close the cover again and leave to reduce and cool normally.

### COPPER LUSTRE

**Nice copper semi matt - needs heavy reduction in dark sawdust**

Frit 4110	=	74
Neph seyenite	=	11
Ball Clay	=	5
Kaolin	=	3
Tin Oxide	=	2
Copper oxide	=	10

We also celebrated David's birthday - thanks Lyn for the delicious cake!

Thanks Lyn, David and Sue for taking photos of the day



Contact Us Login Check Out My Account

# Pottery Supplies Online

For all your ceramic needs....  
Call +61 07 3368 2877

Shop Firing Service About Us Glazes Colour Charts Technical Information Location What's New

**Search**

Search

Pottery Supplies  
Like 267

**Shopping Cart**

YOUR CART  
Empty Cart  
GO TO CHECKOUT

**Categories**

- Bisqueware (12)
- Books (26)
- Casting Slip (11)
- Clay (37)
- Clear Glaze (26)
- Electric Kilns (235)
- Engobe & Slips (3)
- Equipment (28)
- Frit (36)
- Glaze (3)

**Pottery Supplies Online. For all your ceramic needs....**

**Bisqueware**

**Books**

**Casting Slip**

**Clay**

**Clear Glaze**

**Engobe & Slips**

The Sunshine Coast's Pottery and Ceramic Supplies Specialists

# The Clay Shed

2/24 Hi-Tech Drive KUNDA PARK Ph 07 5476 5977  
[www.clayshed.com.au](http://www.clayshed.com.au)

- Pottery Supplies •
- Clay
- Glazes
- Tools
- Brushes
- Firing Service
- Studio Equipment for Hire
- Refractory Materials •

2/24 Hi-Tech Drive KUNDA PARK QLD 4556  
Ph 07 5476 5977 | Fax 07 5476 6061 | Email [clayshed@clayshed.com.au](mailto:clayshed@clayshed.com.au)

Trading Hours Mon-Thur 8:30am- 5pm | Fri 8:30am- 1:30pm | Sat 8:30am- 12pm  
Closed Sundays & Public Holidays

Find us on Facebook



**Picasso's Ceramics** - for all your ceramics, pottery, and sculpting supplies.

41B Tallebudgera Creek Rd, West Burleigh Q 4219 (take Exit 89 off the M1)  
Ph: 07 5535 2449

Facebook: Picasso's Ceramics

Instagram: @picassosceramics

We stock a large variety of products from the following websites.  
If we don't have it we will order it in for you.

[www.walkerceramics.com.au](http://www.walkerceramics.com.au)

[www.venco.com.au](http://www.venco.com.au)

[www.keaneceramics.com.au](http://www.keaneceramics.com.au)

[www.kilns.com.au](http://www.kilns.com.au)

[www.clayworksaustralia.com.au](http://www.clayworksaustralia.com.au)

[www.ilovetocreate.com](http://www.ilovetocreate.com)

[www.maycocolors.com](http://www.maycocolors.com)



## Pack and send Pottery Supply Shop

The shop is open by appointment only, please contact me by text.

During the week the shop is open for appointments 10am to 5pm

Monday, Wednesday, Thursday, Friday and Saturdays.

Orders can be delivered.

[Ipswichpotterysupplies@gmail.com](mailto:Ipswichpotterysupplies@gmail.com)

[www.ipswichpotterysupplies.net](http://www.ipswichpotterysupplies.net)

<https://www.facebook.com/IpswichPotterySupplies/>

Mobile 0420239537 all texts will be answered quickly