

## MONTHLY TIDINGS

June, July and August are shaping up to be busy months for us!

This weekend - **17-19 June** - we are represented at the **Max Galleria gallery in Tewantin** - opening Friday night 17 June and continuing over the weekend - see the poster on the next page.

Our next Raku is on **26 June**. Glad the weather was a bit cooler for our recent Raku workshop.

**23-24 July** we are holding our Saturday morning Studio event at the BVAC Hub at Tarragindi. This will be our involvement in the BVAC Arts and Crafts Expo.

And of course our **Annual Exhibition - 12-14 August** - with a group of like minded artists and crafts people at Mt Coot-tha - details below. This will be a particularly big event for us this year as we will be in the Auditorium which is a much larger space than previous years.

Thanks to Stacey and her crew for organising this and other events this year.

Cheers!

## WSC event calendar for the year

Here are some events we have lined up for you - these may be updated as the year progresses - you never know what is around the corner!

- |  |   |
|--|---|
| <p><b>1 26 June</b> Raku at WSC; due to high demand only 2 pieces per person; up to 150mm diameter of a suitable Raku clay &amp; glaze</p> <p><b>2 23-24 July</b> BVAC Art Expo at the Hub, Tarragindi</p> <p><b>3 12-14 August</b> WSC Annual Exhibition with some other groups, Mt Coot-tha Auditorium</p> | <p><b>4 Sept-Oct</b> Fairfield Library</p> <p><b>5 17 September</b> Regional Gallery Yarraman</p> <p><b>6 September</b> Bus trip to SWELL?</p> <p><b>7 25-27 November</b> BVAC Pop-up</p> <p><b>8 December</b> Xmas Artisan Market?</p> <p><b>9 7 December</b> WSC Xmas Party and AGM</p> |
|--|---|



Western Suburbs Clayworkers presents:



### clayworkers & friends

a celebration of arts and crafts  
Mt Coot-tha Botanic Gardens Auditorium  
Friday to Sunday 12 to 14 August 2022

Opening Friday 6 to 8 pm

Saturday 9am to 4pm, Sunday 9am to 3pm

Presented by the Sherwood Neighbourhood Centre

## contacts

**Western Suburbs Clayworkers**

38 Thallon St Sherwood 4075

Email

[wsclayworkers@hotmail.com](mailto:wsclayworkers@hotmail.com)

Newsletter

David Bartholomew

[david@vcgraphics.com.au](mailto:david@vcgraphics.com.au)

Done anything interesting artistically lately? Let us know with a few words and photos





Derek brought along a small piece of porcelain.  
The clay was from a small sample Gai distributed to the group some time ago.



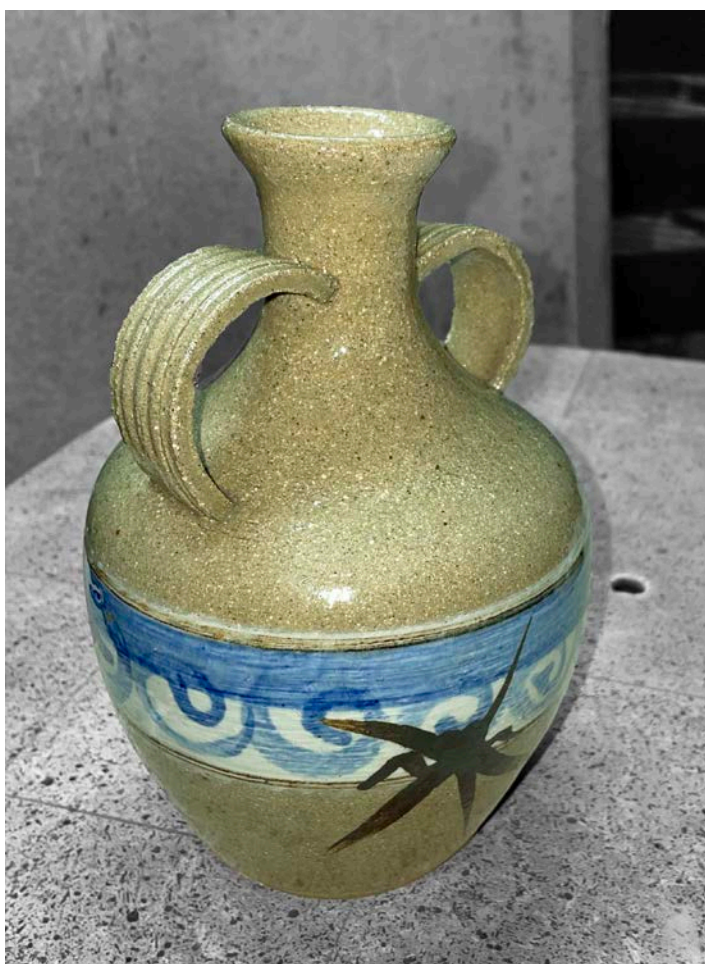
The decoration is sgraffito through black underglaze - Derek is a master of this technique.



Gai brought along a set of tools hand made for her by an old friend - now sadly departed.

In the foreground is a large rib made by Cam as an experiment in the use of coconut wood - looks good but may not wear well.

She also displayed a large rib for large bowls (below).



David followed a suggestion that he add some handles or lugs to some of his work so at left is the result.

The handles were thrown as a small cylinder off the hump; sliced in 2 they made effective handles.

Below is a re-purposed cutting wire handle - the cheap Chinese ones' wire always break and are hard to repair. The wire is now held in by a screw which makes replacement easy!





# Raku workshop



Can you pick who was modelling some of our new safety gear.?

The answer: It was Bob!

Above are the results of the day's workshop.

## AN ECLECTIC FUSION

A group of 6 Artists from Brisbane are having a 3 day exhibition (ART VACATION).  
Leaving the City and heading to beautiful Tewantin,  
to show a collection of Ceramic, Painting, Wood, Metal and Jewellery.

### Max Galleria and Studio

Friday, 17th June 6pm - 9pm,

Exhibition Officially opened by Councillor Karen Finzel

Exhibition Open 17th, 18th and 19th June | Open Saturday and Sunday 9am - 4pm



Stacey Morrison | Geeta Harmon | Helena Mendes  
David Bartholomew | Toni Bren-Clarke | Claude Brock

Max Galleria, Shop 11a, 113 Poinciana Avenue (Tewantin Plaza), Tewantin - Noosa, QLD Ph: 0414 725 424

Phone: 0414 725 42 | Facebook: facebook.com/maxgalleria | Instagram: @maxinestibbe

SPONSORS:

Max Galleria  
and Studio

Western Suburbs  
Clayworks



Toni Bren-Clarke  
Redcliffe



July 23rd—10am—4pm

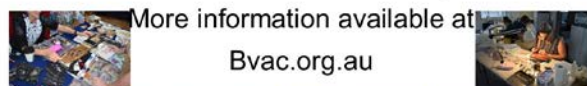
July 24th—10am—3pm

A weekend of

Demonstrations and Sales



Held at 140 Weller Rd, Tarragindi.



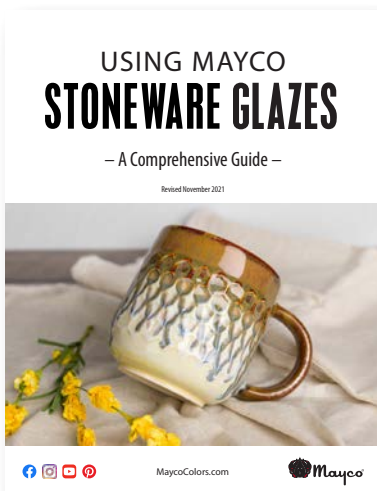
More information available at

Bvac.org.au





# Extras



An extract from the Mayco 'Using Stoneware Glazes' brochure. Highlights are guides to safety for tableware, firing guide and a glossary.

Download a copy here:

[https://www.maycocolors.com/wp-content/uploads/2021/03/UsingMaycoStonewareGlazes\\_2020.pdf](https://www.maycocolors.com/wp-content/uploads/2021/03/UsingMaycoStonewareGlazes_2020.pdf)

*As in everything we do, Mayco's goal is to help the artist achieve their desired results. There are many variables that come into play when creating a ceramic object: the clay body, glaze selection, glaze application, kiln atmosphere and firing temperature are a few major contributors to the finished product.*

*The purpose of this brochure is to identify the variables that can affect the outcome of Mayco's Stoneware Glazes and to provide tips for use that will help incorporate them successfully into your studio practice. Mayco's stoneware sample tiles are made with a slip cast, white stoneware body that is fired flat to cone 6 in oxidation and cone 10 in reduction. Why? – So you can make them work for you.*



**Picasso's Ceramics** - for all your ceramics, pottery, and sculpting supplies.

41B Tallebudgera Creek Rd, West Burleigh Q 4219 (take Exit 89 off the M1) Ph: 07 5535 2449

**Facebook:** Picasso's Ceramics • **Instagram:** @picassosceramics

**Webpage:** <https://picassosceramics.com.au>

We stock a large variety of products from the following websites.

If we don't have it we will order it in for you.

[www.walkerceramics.com.au](http://www.walkerceramics.com.au)

[www.wenco.com.au](http://www.wenco.com.au)

[www.keaneceramics.com.au](http://www.keaneceramics.com.au)

[www.kilns.com.au](http://www.kilns.com.au)

[www.clayworksaustralia.com.au](http://www.clayworksaustralia.com.au)

[www.ilovetocreate.com](http://www.ilovetocreate.com)

[www.maycocolors.com](http://www.maycocolors.com)



## Pack and Send Pottery Supply Shop

The shop is open by appointment only, please contact me by text.

During the week the shop is open for appointments 10am to 5pm Monday, Wednesday, Thursday, Friday and Saturdays.

Orders can be delivered.

[Ipswichpotterysupplies@gmail.com](mailto:Ipswichpotterysupplies@gmail.com)

[www.ipswichpotterysupplies.net](http://www.ipswichpotterysupplies.net)

<https://www.facebook.com/IpswichPotterySupplies/>

Mobile 0420239537 all texts will be answered quickly